



Coco New Design

Approved by Nature







## *Back to basics, back to nature*

---

This isn't a new trend, but it's gaining ground every year. An increasing number of holidaymakers are keen to get back to nature. And it was with the aim of being at the forefront of this trend that we came up with the new design for Coco.

## *Coco, in harmony*

---

This is one of the greatest strengths of the new Coco. It blends respectfully and harmoniously into its environment without deteriorating your plots, bringing an attractive new dimension to your bare pitches.



## *Coco's renewal is in tune with the times.*

---

And renewal is something that comes naturally to Coco. It is constantly adapting, constantly reinventing itself to remain relevant and to appeal to new customers each time. Here's to imagination, here's to innovation.





## A lodge tent feel

With its crisp, clean lines and bold colours, Coco's design celebrates simplicity and revives the spirit of the lodge tent, with an added French twist.

Its appearance is certainly original, with its chic liquorice-coloured or vanilla canvas, to adapt to different tastes, double glazed doors and slanting protective awning built-in.



Caution: Licorice canvas absorbs and stores heat.

## A cosy nest

There's no denying the fact that the move back to nature, to simplicity – to sobriety even – is a strong trend right now. But holidaymakers still have their demands. Over the years, there has been a shift upmarket and they've become used to a certain level of comfort. With its practical furniture, soothing colours, smart storage solutions and quality bedding, the inside of Coco provides holidaymakers with everything they now expect. With natural charm and a restful atmosphere as a bonus.



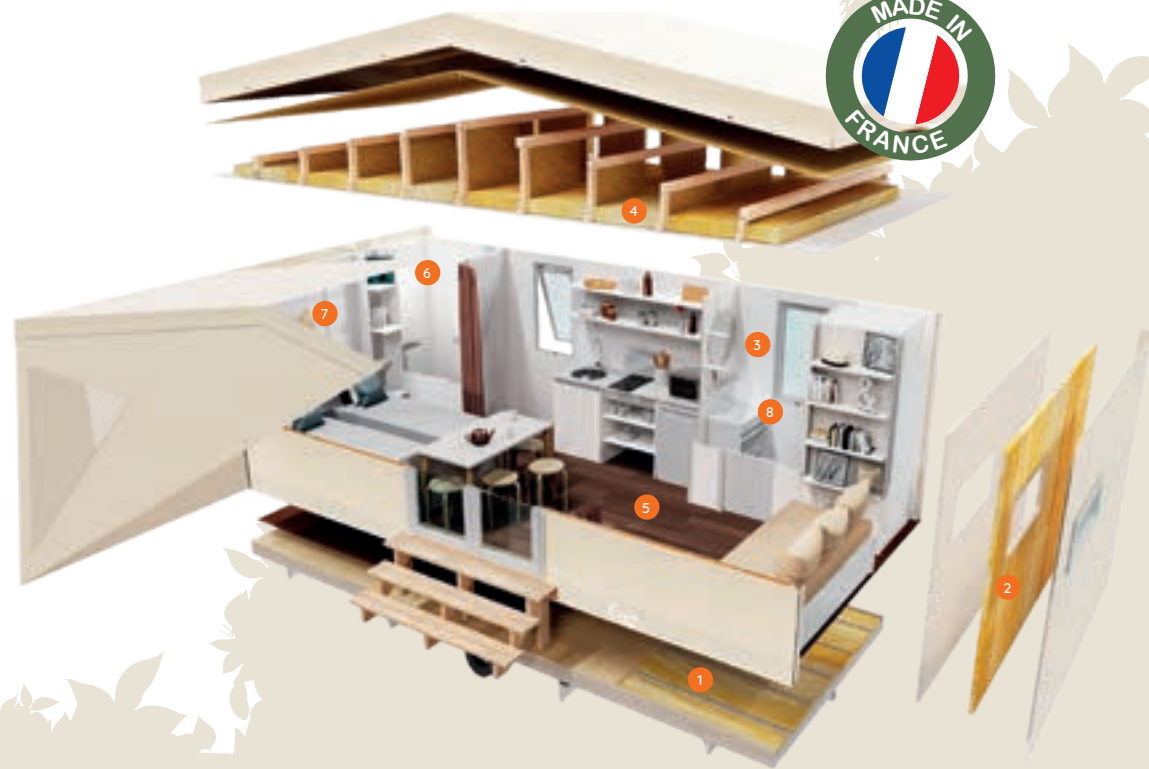


*Coco is not a mobile home...  
but is just like one!*



Inside Coco, you'll find all the equipment and comforts of a mobile home... but with the feel of a tent!

- 1 Metal chassis in galvanised steel.
- 2 Wooden structure covered with a new matt-finish M2 grade canvas. Extremely tear-resistant.
- 3 EN 721-compliant ventilation.
- 4 100% glass wool insulation on all sides (50 mm in the floor, 45 mm in the walls and 100 mm in the ceiling).
- 5 Phthalate-free hard-wearing lino.
- 6 Electrical switchbox with main circuit breaker.
- 7 LED lighting.
- 8 Shower room in the Coco Salle d'O model.



*It all counts!*

Coco is particularly well protected against the elements, which greatly reduces the risk of cancellation due to bad weather. In addition, it is eco-designed and entirely recyclable. So when we say that Coco is nature-friendly, it's true!

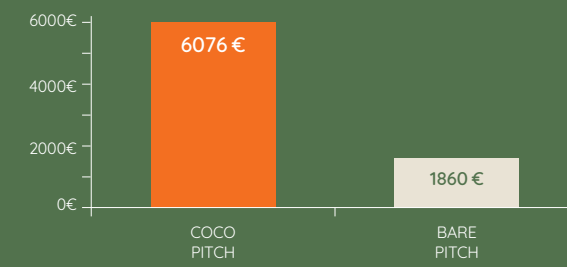






## The flexible way to equip your site!

With long-term rental, you don't need to dip into your cash reserves. Coco is available for rent on a monthly basis for 7 years, with no initial down payment. Of course, Coco is also available to buy. The choice is yours!



Coco generates three times more revenue than a bare pitch in peak season.

Source: In-house study on pricing in France based on a two-bedroom COCO SWEET without shower room.



## Everyone's a winner!

For your guests, Coco is an affordable accommodation choice. For you, it's the guarantee of excellent profitability for each of your bare pitches. In short, with Coco, everyone's a winner!







## Even more choice with Coco!

Coco Salle d'O offers the comfort of a shower room and toilet inside the accommodation unit, for campers who want everything under the same roof. Of course, Coco is also available without the shower room, in its original version, suited to your non-serviced pitches.

And as security is key, all Coco units are fitted with double doors with safety glass which can be locked for full peace of mind.

## With or without?

To suit all tastes, Coco can also be supplied without an awning!







*Everything  
is easier  
with Coco!*

Coco is easy to install, move and maintain. Coco is at home on all serviced or non-serviced pitches and on any type of camping ground. When it comes to maintenance, its ultra-resistant matt-finish fabric is dirt-repellent, so it can be easily cleaned by hand using a hose.



*Head to*

Coco's YouTube channel to see videos of Coco.

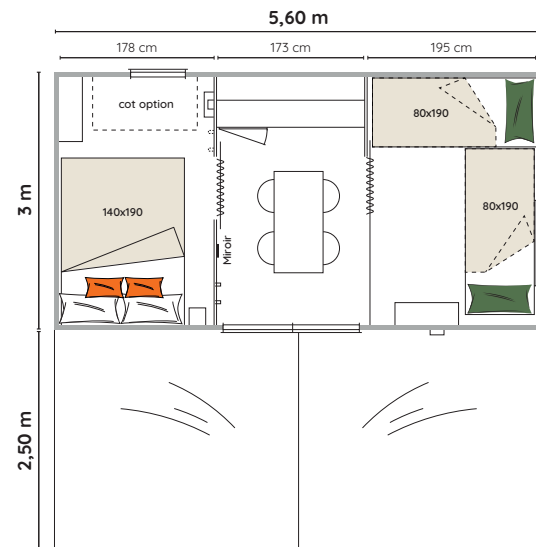
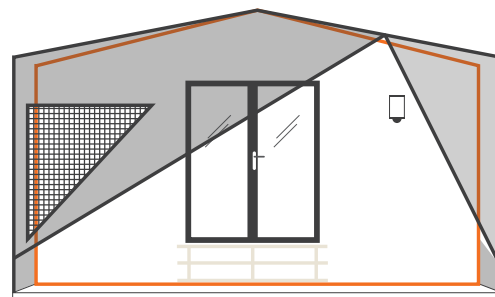


Now, all that's left  
to do is choose  
your Coco!

With or without a shower room, for  
serviced or non-serviced pitches, with  
liquorice- or vanilla-coloured canvas,  
take your pick to match your needs  
and your environment.

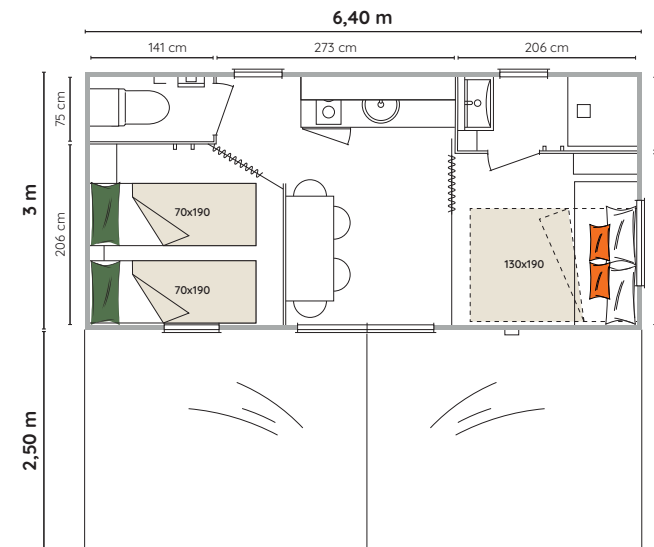
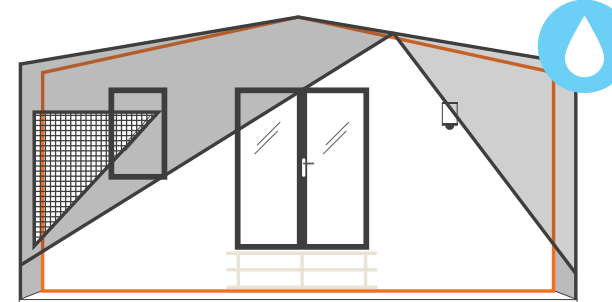
### Coco sweet

4 beds | 15,5m<sup>2</sup> + 13,9m<sup>2</sup> awning



### Coco salle d'O

4 beds | 17,6m<sup>2</sup> + 15,8m<sup>2</sup> awning



Liquorice-coloured  
canvas

Vanilla-coloured  
canvas





*Find us now on*

[mobilhome-coco.com](https://mobilhome-coco.com)



**BIO HABITAT**  
**GROUPE BENETEAU**

Find the full BIO Habitat range from the BENETEAU Group on our website [beneteauhabitat.com](https://beneteauhabitat.com)